



## Research Committee on the Sociology of Disasters

### NOTE FROM THE PRESIDENT

Welcome to our spring issue of *Unscheduled Events*. This newsletter is going to be brief.

As you know, our current board members are reaching the end of our term and I am excited to announce your 2023-2027 board. Michèle Companion has been elected to serve as our next President, and Marlon de Luna Era will serve as our next Vice President. Michelle Meyer is our At Large Country Category A board member, Andrea Lampis is our At Large Country Category B board member, and Sanjukta Bhaduri is our At Large Country Category C board member. See our board member biographies on pages 2 and 3. And, I want to publicly thank everyone who was nominated for a position. We are eager to find additional opportunities for you to be involved.



The 2023 World Congress is quickly approaching in Melbourne, Australia. Even though my participation will be virtual, I look forward to engaging with you all. The annual Researchers Meeting is also coming up this summer in Colorado. You can find additional information about each of these on page 4.

The final note is a reminder that the International Journal of Mass Emergencies and Disasters has been relaunched with SAGE. I am excited about our future and encourage everyone to publish with us. See page 5 for additional information.

Respectfully!

Bill Lovekamp



### INSIDE THIS ISSUE

President's Note.....	1
2023-2027 Board.....	2-3
Conferences.....	4
IJMED.....	5

# 2023—2027 President and Vice President

## PRESIDENT

**Michèle Companion** is Professor in the Department of Sociology at University of Colorado-Colorado Springs. She works as an humanitarian aid response coordinator, specializing in food and livelihood security in complex emergencies and disasters. She has served as a consultant for U.S. based and international humanitarian organizations and agencies around the globe and in the United States. She has lived and worked extensively in Ethiopia, Malawi, Mozambique, Angola, South Africa, Uganda, and Rwanda. She works with Native American tribes and other Indigenous groups on issues of food security, food sovereignty, and cultural survival around livelihood preservation and access to traditional food and medicine, especially in the face of climate change and disasters. She is the secretary and Board Member of the Low-lander Center, working with southern Louisiana tribes and other groups impacted by sea level rise and climate impacts. She is the Chair of the International Coordinating Committee for the Natural Hazard Mitigation Association. She was a Visiting Research Professor at the Disaster Prevention Research Institute in Kyoto, Japan, where she examined urban food access and constraints for disaster mitigation and response.

She has a long relationship with RC-39 and ISA, including being an assistant editor of *IJMED*. She has served as the World Forum RC-39 Program Co-coordinator in 2016 (Vienna) and 2021 (Porte Alegre). She is currently serving as the ISA World Congress RC-39 Program Co-coordinator (2023 Melbourne). She has been serving as the Secretary/Treasurer of the International Research Committee on Disasters since 2018. She received the RC-39 *President's Service Award* in 2018.

## VICE PRESIDENT

**Marlon de Luna Era** is an Associate Professor and Chairperson of the Department of Sociology and Behavioral Sciences of De La Salle University, Manila. Marlon completed his AB Sociology at the University of the East, Manila; his M.S. in Human Settlements Development at the Asian Institute of Technology, Thailand and a Ph.D. on Development Studies at De La Salle University. Marlon has extensive teaching and professional experiences in disaster resilience, solid waste management, gender and local governance. Marlon had worked with the Philippine Department of Social Welfare and Development as Emergency Assistance Specialist; managed the Yapang Resettlement Project for 300 family victims of Mt Pinatubo eruption in 1991; Program Associate of the Asian Disaster Preparedness Center in Thailand, Operations Manager of the Corporate Network for Disaster Response. He successfully completed local and international projects such as Capacity Building for Asia on Resilient Education (CABARET) funded by Erasmus +; study on the roles of intangible heritage in disaster recovery and resilience in Nepal and Tunisia. He had published articles on disaster accountability, social capital and harmonization of DRR/CCA and solid waste management; Consultant to some UN Bodies, national and local governments and private sectors; former Board Member of the Philippine Sociological Society; now a Fellow of the Philippine Public Safety College (PPSC); President of the Local Governance Training and Research Institution-Philippine Network; President of the Solid Waste Management Association of the Philippines and Trustee for Southeast Asia of the International Association for Community Development. Marlon has been an active member of ISA-RC 39 since 2004 and participated in various conferences and activities face to face and online.

## 2023—2027 At Large Board Members

**Michelle Meyer** is the Director of the Hazard Reduction and Recovery Center (HRRC) and an Associate Professor in Landscape Architecture and Urban Planning at Texas A&M University. She received her Ph.D. in Sociology from Colorado State University. Michelle studies inequality and how disaster and environmental settings intersect with structural forces that maintain or transform inequality. She uses the lens of social capital and collective efficacy to theoretically understand how relationships between individuals and between governmental and nongovernmental organizations generate or hinder disaster risk and recovery. Michelle has worked on several large interdisciplinary projects including the NIST Center of Excellence for Risk-Based Community Resilience Planning, US Department of Energy Urban Integrated Field Lab, and an NSF Coastlines and Peoples Focused Hub. She has conducted research nationally and internationally including in Japan, Sri Lanka, and Haiti.

Michelle looks forward to supporting the continued growth of participation in and recognition of the excellence of the RC-39 scholar community. She has been a member for over a decade, presented at the 2014 and 2018 World Congresses, and sent students to the 2018 and 2023 Congresses. She served as Chair or Co-Chair for the Annual Researchers Meeting from 2015-2019, overseeing a growth in abstract submission and attendance. She received the RC-39's President's Service Award for her work in 2018. She facilitates participation of 15-20 HRRC students there annually. She began in 2023 as an Associate Editor of the *International Journal of Mass Emergencies and Disasters*, supporting its transition to Sage Publishers.

**Andrea Lampis** (Institute of Energy and Environment, University of São Paulo, Brazil) joined RC39 in 2014 when he was an associate professor in the Department of Sociology at the National University of Colombia. With RC39 he collaborated in the institutional activities on the following occasions: In 2014, he organized the session 'Cities as Socio-Ecological Places: Global Risks and Local Vulnerabilities' for the XVIII ISA World Congress of Sociology in Yokohama, Japan; in 2016 (with Prof. Michelle Companion) he coordinated the organization of thirteen RC39 sessions at the 3rd ISA Forum of Sociology in Vienna, Austria. There he also represented RC39 at the Common sessions with the paper 'Global risks & local vulnerabilities: Considerations on the shaping of disasters in contemporary Global South'. In 2021 he organized the session 'Mariana, Brumadinho and Their Brother: Waiting for the Next Overwhelming Disaster at the IV ISA Forum of Sociology in Porto Alegre, Brazil (virtual). Between 2018 and 2022 he served on the RC39 board as the representative of Category C countries. Following Companion, Marchezini and Peek's initiatives to foster the inclusion of researchers from categories B and C countries, during that tenancy he started a project on the 'Sociology of Disasters in Category C Countries: Landmarks and Challenges', intending to further the existing systematizations of the state-of-the-art of research in those areas, a project which is still on-going. For the XX World Congress of Sociology in Melbourne, Australia, he will organize the session 'Decolonizing Disasters Studies in the Global South: First-hand Research Experiences'.

**Sanjukta Bhaduri** is a full time Professor of Urban Planning at SPA, New Delhi. At present, she is Head of the Department of Urban Planning and Regional Planning. She is the Centre for Urban Disaster Studies (CUDS), Coordinator of Design Innovation Center (DIC), and President, Institution Innovation Council. She is the Director of SPA Foundation for Innovation and Research for Social Transformation (SPA FIRST), a Section 8 Company. She has been the Former Dean (Research) at SPA, New Delhi.

She completed a Bachelor in Architecture from Jadavpur University (1983), Masters in City Planning from I.I.T Kharagpur (1985) and PhD from SPA, New Delhi (2003). She has 36 years of professional, research and teaching experience in the fields of Urban Planning and Environmental Planning; the areas of special interest are Sustainable Development of settlements, Inclusive Planning, Participatory Planning, Social aspects related to Planning, Disaster Management, Urban Environmental Management, Assessment of Environmental Impacts, Energy and Urban Development, Environmental Quality of Human Settlements, Smart cities. Her research projects include collaborative research on Community led disaster risk management for Mumbai with Kyoto University. She was also the Chairperson of 2 Study Groups (Disaster Management & Environment) for Review of Regional Plan of Delhi. She has been a member of ISA from 2015 and attended the III ISA Forum of Sociology at Vienna in 2016 and presented the paper on Social Impact Assessment of Transport Projects.

# XX ISA World Congress of Sociology



**Resurgent Authoritarianism:**  
*Sociology of New Entanglements of  
Religions, Politics, and Economies*

**Melbourne, Australia** | June 25-July 1, 2023  
Melbourne Convention and Exhibition Centre  
[www.isa-sociology.org](http://www.isa-sociology.org)



Valerie Ingham and Michèle Companion, RC-39 Program Coordinators for the International Sociological Association's 20<sup>th</sup> World Congress of Sociology, are excited to invite you to this year's conference in Melbourne, Australia from 25 June – 1 July at the Melbourne Convention and Exhibition Centre. We have a great lineup of 17 sessions. For a comprehensive list of our sessions, please see the forthcoming program.

## Researchers Meeting

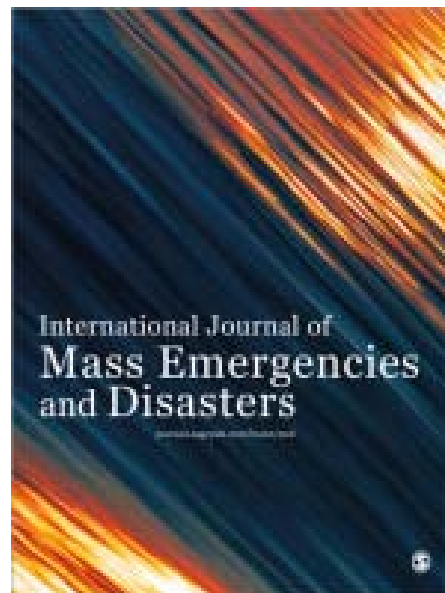
**New Frontiers of Disaster Research: Action-Oriented Approaches to  
Solve Complex Challenges**



Sabine Loos and Sara Hamideh have been busy co-organizing the 2023 Researchers Meeting to begin on the afternoon of Wednesday, July 12 and through the day on Thursday, July 13 immediately following the 48th Annual Natural Hazards Research and Applications Workshop, to be held in Broomfield, Colorado, USA. For additional information, see <https://hazards.colorado.edu/workshop/2023/researchers-meeting/overview>.



Feel free to further explore the relaunching of the [International Journal of Mass Emergencies and Disasters with SAGE](#), our revised [Aims and Scope](#), the [editorial team](#), and the [opportunities for publishing](#) and participating as a [reviewer](#) or team member as we seek to continue IJMED's forty years of excellence.



ISA RC39  
P.O. Box 961  
Mattoon, IL  
61938, USA

E-mail: [ircdsecretary@gmail.com](mailto:ircdsecretary@gmail.com)

